



Franklin Gardens, Didcot, OX11 9 FQ



## Property name location and address

Hodsons are delighted to be presenting to the market this impressive two bedroom first floor flat on the Willowbrook Development in Didcot. With a generous entrance hall with two storage cupboards, the main bedroom with fitted wardrobe and en-suite a further double bedroom and the main bathroom and the open plan kitchen/diner/lounge with double aspect windows to the rear and double French doors leading to the wrap around balcony offering a stunning view over the Willowbrook Park green space the property has a lot to offer.

The property is within easy walking distance of Didcot Train station, the main town and the amenities on the Ladygrove estate. Viewing is highly recommended.

### Location

The Willowbrook Development is a new development within walking distance of the amenities on the Ladygrove Estate, the town centre and Didcot Train Station. The Sires Hill Primary Academy school is situated on the estate and the property is situated within easy access of the local secondary schools.



- First floor flat with stunning views over the green space
- 128 Years remaining on the lease
- One allocated parking space and visitors parking available in the carpark to the rear of the building
- Main bedroom with built in wardrobes and en-suite
- Second double bedroom
- Generous open plan lounge/diner/kitchen with double French doors leading to the wrap around balcony
- Modern bathroom with shower over the bath
- Storage cupboards in the hallway
- Within walking distance of Didcot Train Station and the town centre



1 Receptions



2 Bathrooms



Tenure Leasehold

EPC Rating C





Bright and airy open plan kitchen/diner/lounge with double aspect French doors looking out over the Willowbrook Park greenspace.







Stunning views from the open plan living space and wrap around balcony.











One allocated parking space with visitors parking available.

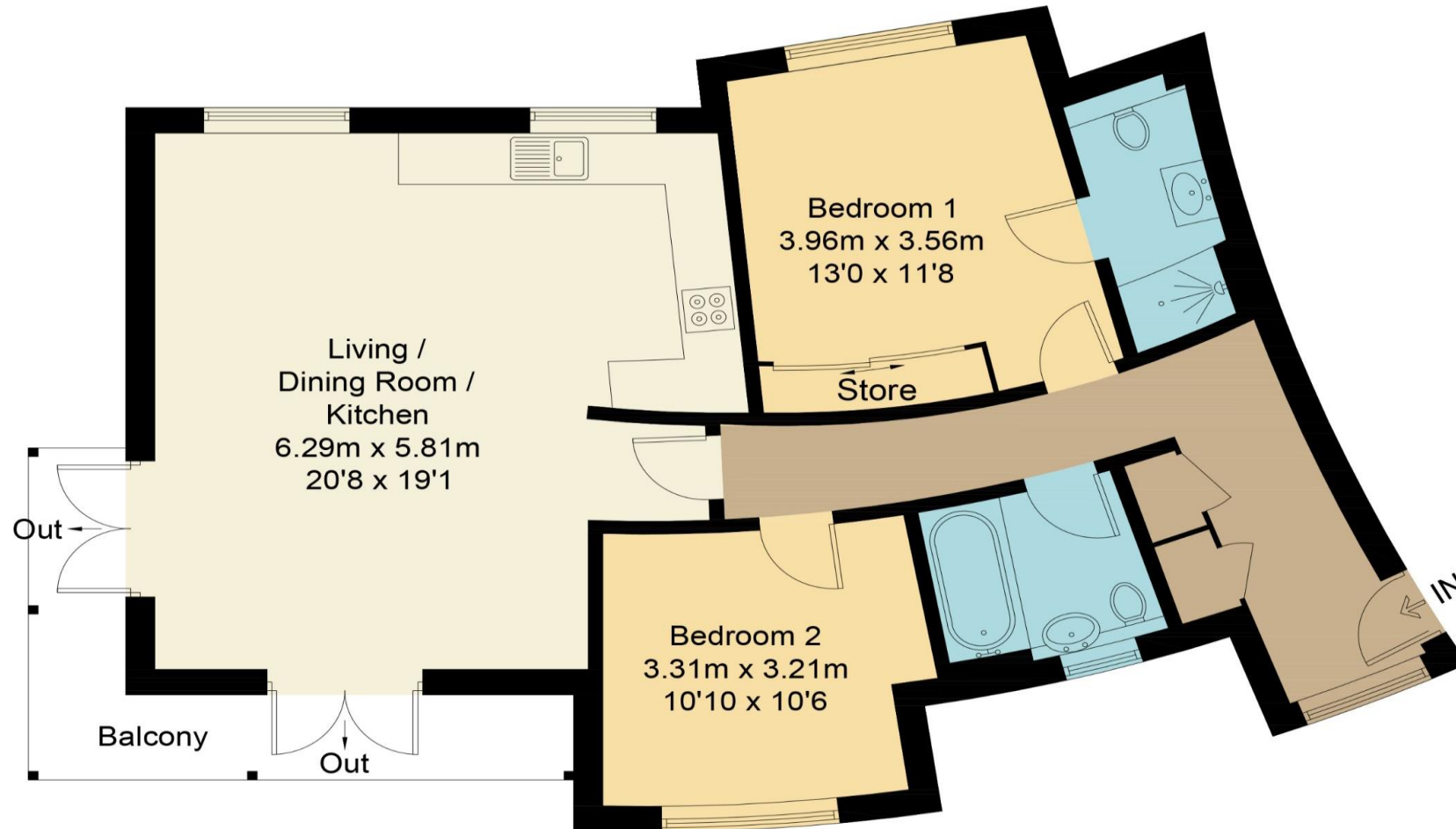


 Please recycle me



# Franklin Gardens, OX11

Approximate Gross Internal Area = 81.2 sq m / 874 sq ft



## First Floor

Floor plan produced in accordance with RICS Property Measurement Standards.  
© Mortimer Photography. Produced for Hodsons.  
Unauthorised reproduction prohibited. (ID1054341)

